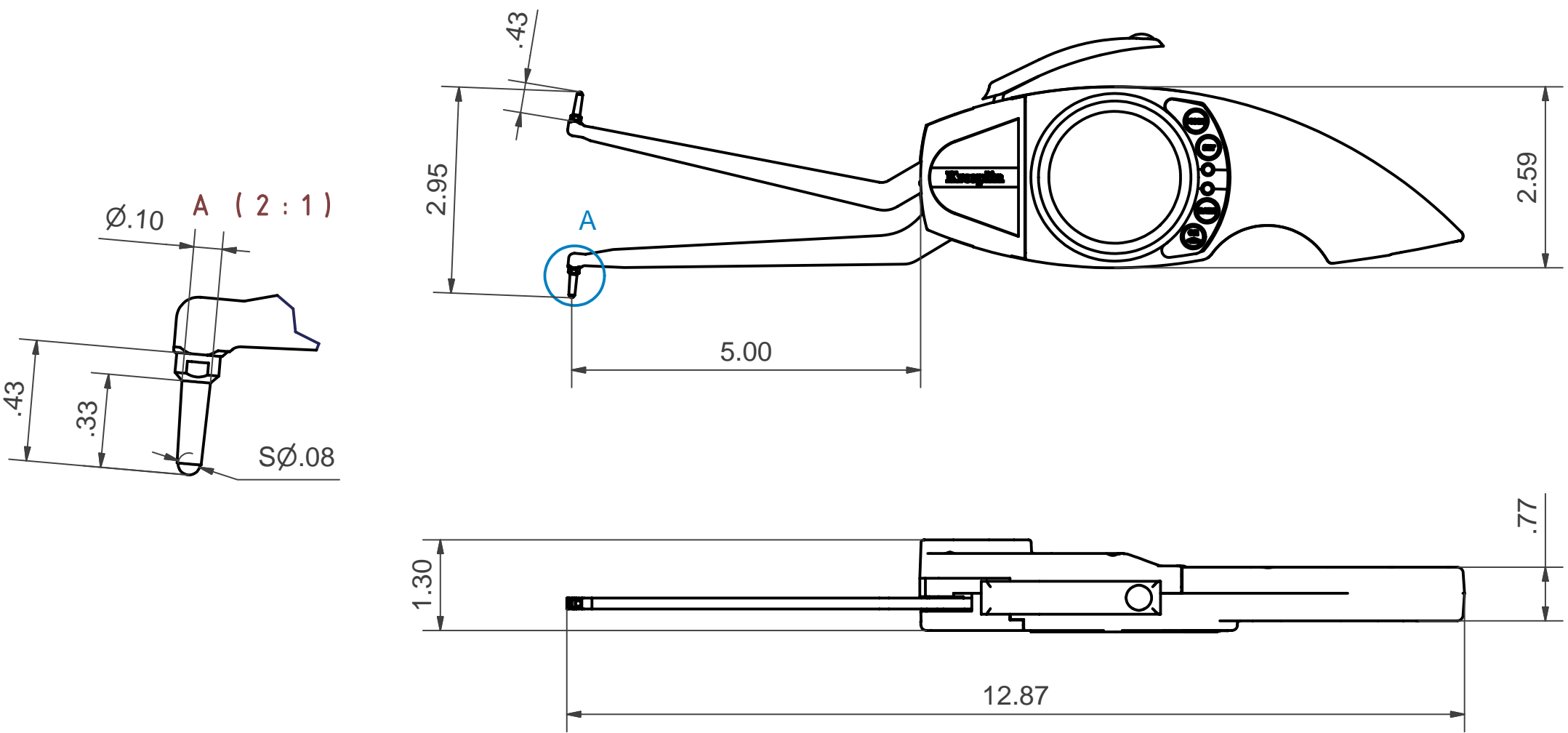


DATA SHEET: F435

Kroeplin GmbH
 Gartenstraße 50
 36381 Schlüchtern

Telefon (06661)86 0
 Telefax (06661)86 39
 sales@kroeplin.com
 www.kroeplin.com

Kroeplin
 Längenmesstechnik



SUBJECT TO TECHNICAL ALTERATIONS

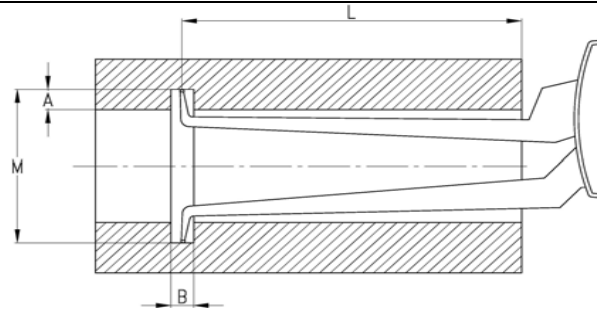
SCALE: 1:2

TYPE: F
 RANGE: 1.38 - 2.95 INCH
 DIGITAL STEP: .001 INCH

PRICECLASS: 22
 RANGE OF INDICATION: 1.39 - 2.99 INCH
 MEASURING FORCE: 1.3 - 1.8 N
 WEIGHT: 380 g

ACCEPTABLE DEVIATIONS (VDI/VDE/DGQ 2618 Bl. 12.1/13.1)
 MAX. PERMISSIBLE ERRORS: G = .002 INCH
 REPEATABILITY: r = .001 INCH

REFERENCE TEMPERATURE: 20°C
 OPERATION TEMPERATURE: 10°C - 30°C
 STORAGE TEMPERATURE: -10°C - 50°C



Measuring Range M [inch]

Groove Depth A

	1.38	1.42	1.46	1.50	1.54	1.57	1.61	1.65	1.69	1.85	2.01	2.17	2.32	2.48	2.64	2.80	2.95
0	0/4.51	0/4.55	0/4.59	0/4.63	0/4.67	0/4.70	0/4.74	0/4.78	0/4.82	0/4.96	0/4.96	0/4.96	0/4.98	0/4.98	0/5.10	0/5.35	0/5.61
.02		.07/4.53	.07/4.57	.07/4.61	.07/4.65	.07/4.69	.07/4.72	.07/4.76	.07/4.80	.07/4.96	.07/4.96	.07/4.96	.07/4.98	.07/4.98	.07/5.06	.07/5.30	.07/5.55
.04			.09/4.57	.09/4.61	.09/4.63	.09/4.67	.09/4.70	.09/4.74	.09/4.78	.09/4.92	.09/4.96	.09/4.96	.09/4.96	.09/4.98	.09/5.00	.09/5.26	.09/5.51
.06				.09/4.57	.09/4.61	.09/4.65	.09/4.69	.09/4.72	.09/4.76	.09/4.92	.09/4.96	.09/4.96	.09/4.96	.09/4.98	.09/4.98	.09/5.20	.09/5.45
.08					.09/4.59	.09/4.63	.09/4.67	.09/4.70	.09/4.74	.09/4.88	.09/4.96	.10/4.96	.10/4.96	.10/4.96	.10/4.98	.10/5.16	.10/5.39
.10						.10/4.61	.10/4.65	.10/4.69	.10/4.72	.10/4.86	.10/4.96	.10/4.96	.10/4.96	.10/4.96	.10/4.96	.10/5.12	.10/5.35
.12							.10/4.63	.10/4.67	.10/4.70	.10/4.84	.10/4.96	.10/4.96	.11/4.96	.11/4.96	.11/4.96	.11/5.06	.11/5.30
.14								.10/4.65	.10/4.69	.10/4.82	.11/4.96	.11/4.96	.11/4.96	.11/4.96	.11/4.96	.11/5.02	.11/5.26
.16									.10/4.67	.11/4.80	.11/4.94	.11/4.96	.11/4.96	.11/4.96	.11/4.96	.12/4.98	.12/5.20
.18										.11/4.78	.11/4.92	.11/4.96	.11/4.96	.12/4.96	.12/4.96	.12/4.96	.12/5.16
.20										.11/4.76	.11/4.90	.12/4.94	.12/4.94	.12/4.96	.12/4.96	.13/4.96	.13/5.12
.22										.11/4.72	.12/4.88	.12/4.94	.12/4.94	.13/4.94	.13/4.94	.13/4.94	.13/5.06
.24										.11/4.70	.12/4.84	.13/4.94	.13/4.94	.13/4.94	.13/4.94	.13/4.94	.13/5.02
.26											.12/4.82	.13/4.94	.13/4.94	.13/4.94	.13/4.94	.14/4.94	.14/4.98
.28											.13/4.80	.13/4.94	.13/4.94	.14/4.94	.14/4.94	.14/4.94	.15/4.94
.30											.13/4.78	.13/4.92	.14/4.94	.14/4.94	.14/4.94	.15/4.92	.15/4.92
.31											.13/4.76	.14/4.88	.14/4.94	.15/4.94	.15/4.92	.15/4.92	.15/4.92
		B/L															

B = min. groove width [inch]
L = max. useable arm length [inch]